



GIGABIT NETWORK USB ADAPTER



Quick Installation Guide
DN-10150-1

Product Introduction

DN-10150-1 is an USB 2.0 to Gigabit Ethernet Adapter that provides network links speed up to 1000Mbps with a RJ-45 Ethernet port. It is backward-compatible with USB 1.x computer system and 10/100 Mbps Ethernet networks. This compact and portable network adapter is ideal for desktop computer or as laptop accessory.

Features

1. Compliant with the Standard Specification of USB 1.1 and 2.0
2. Fully compliant with IEEE 802.3, IEEE 802.3u, IEEE 802.3ab
3. 10/100/1000M data auto-negotiation
4. Support USB Full and High Speed modes with bus power capacity
5. Supports suspended mode and remote wakeup
6. Upstream port: USB type A
7. Downstream port: RJ45
8. Support Windows® XP/Vista/7 (32/64 bit)

System Requirements

1. Windows® XP/Vista/7 (32/64 bit)
2. USB port (USB1.1/2.0)

Package Contents

- 1 x USB 2.0 to Gigabit Ethernet Adapter
- 1 x Driver CD
- 1 x User Manual

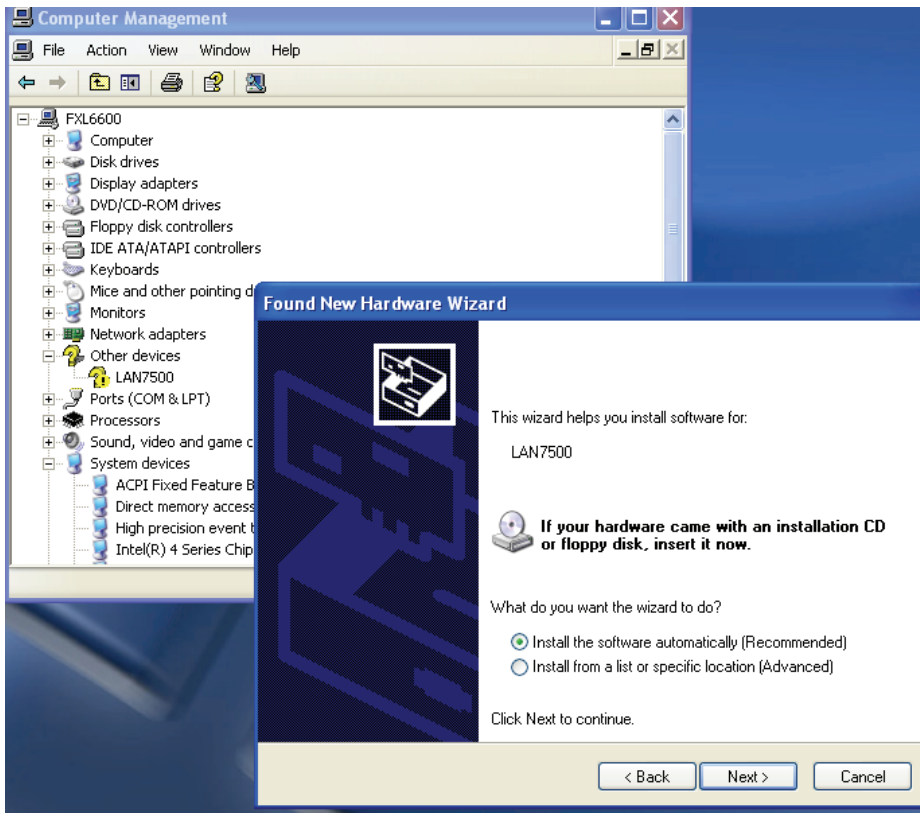
Note: Contents may vary depending on country/market

Hardware Installation

1. Plug the DN-10150-1 directly into an available USB port on your computer or notebook.
2. Connect one end of your network cable into the RJ45 port of DN-10150-1.
3. Connect the other end of the network cable into an available Ethernet port on the router, switch, or any other networking devices.

Driver Installation for Windows XP/Vista/7

1. Under Windows 98/2000/XP/WIN7, once DN-10150-1 is plugged into PC/NB, Windows will detect the adapter and attempt to install driver for it.



2. The "Update Device driver Wizard" will appear on the screen, please click the "Cancel" button.
3. Insert the provided CD into the disk drive. Please locate and double-click on the "**LAN7500-WDF-v1.1.9.0.exe**" file in the CD to launch the installation program.



4. Follow the installation wizard to complete the driver installation.

When the driver is installed successfully, this USB network adapter will be shown on the System Properties as shown below.

